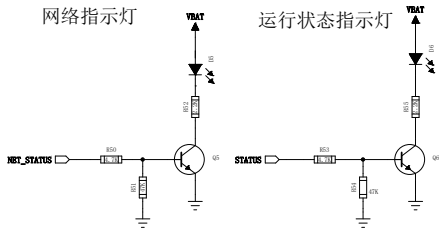
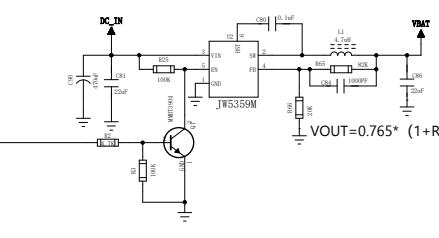


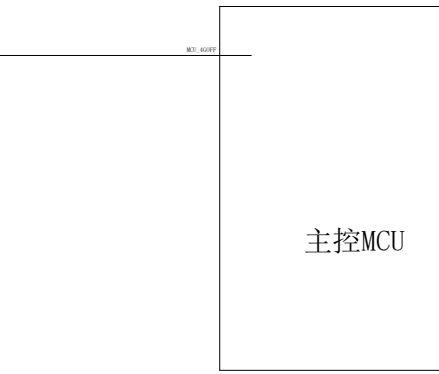
REVISION RECORD			
LV#	REV NO.	APPROVED:	DATE:



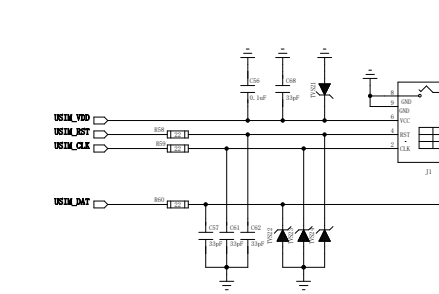
特别提醒:
Air780ER的IO电平固定为1.8V;



DCDC开关电源供电设计指导以及选型:
<https://docs.openluat.com/air780er/at/hardware/design/power/>

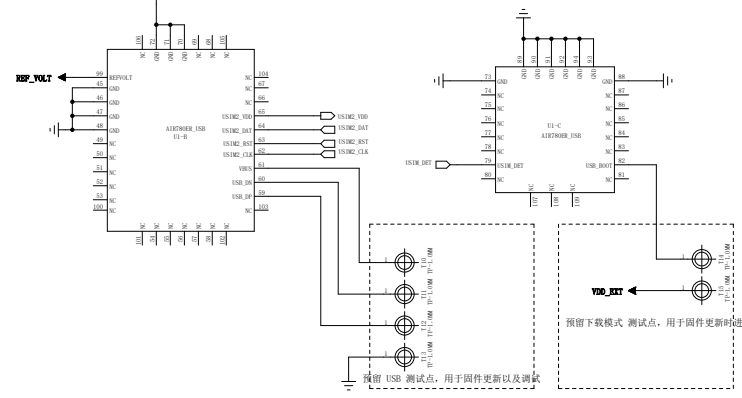
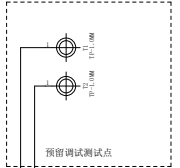


Air780ER模块串口设计硬件指导:
<https://docs.openluat.com/air780er/at/hardware/design/uart/>

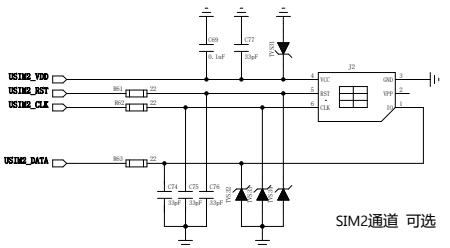


SIM1 通道
1) SIM1 自适应支持 1.8V/3.3V 电平的 SIM 卡，可以理解为用户任意卡都支持；
2) 不同的是，Air780ER SIM2 支持的是 SIM 卡电平与 GPIO 电平相同。
Air780ER GPIO 电平固定为 1.8V，因此 SIM2 也只支持 1.8V SIM 卡。

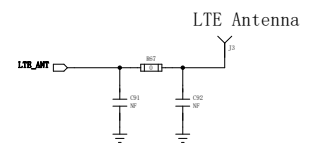
SIM 卡电路很简单，但也有几点需要注意一下
<https://docs.openluat.com/air780er/at/hardware/design/sim/>



Air780ER 开机以启动及外围电路设计指导:
<https://docs.openluat.com/air780er/at/hardware/design/power/>



SIM2通道 可选



推荐预留P型匹配电路

关于蜂窝模组天线的一些大白话常识
<https://docs.openluat.com/air780er/at/hardware/design/ant/>

DRAWN: JJ		DATE: 2024-10-31		COMPANY: 上海合宙	
DESIGNED: laolu		DATE: 2024-11-1		TITLE: Air780ER用于USB上网场景时的参考设计	
QUALITY CONTROL: laolu		DATE: 2024-11-1		CORE: laolu	SIZE: A1
RELEASED: laolu		DATE: 2024-11-1		DRAWING NO: 2024-11-1	
SCALE: G2		SHEET: 1 of 1		REV: 1	